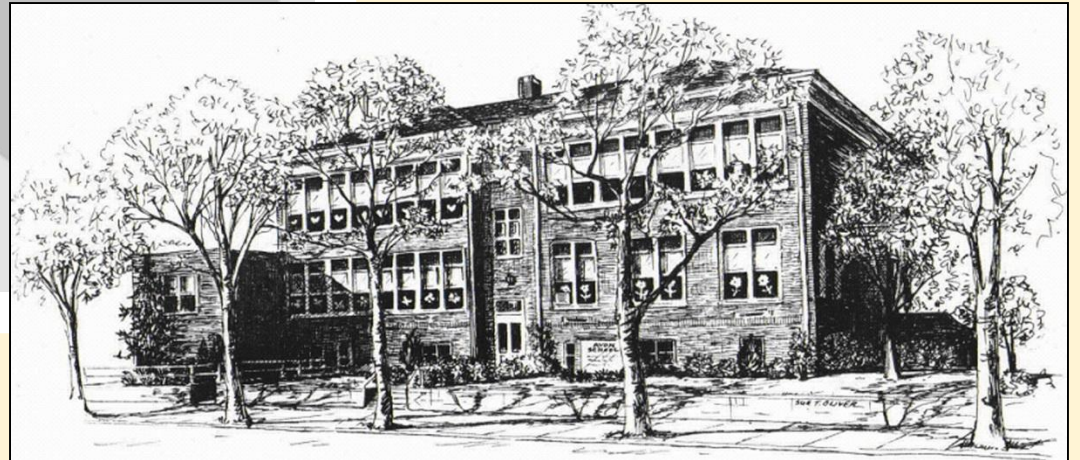




Avon Elementary School

A Tradition of Excellence



Avon School Budget



The 2015-2016 budget supports the thorough and efficient education of 213 students in grade K-12

Also supports the transportation of all private school students, K-12

Elementary School

- *157 students*
- *6 out of district students in elementary and high school*

High School

- *30 Manasquan High School Students*
- *7 Vocational High School Students*
- *13 Red Bank Regional High School Students*

Avon School



- *157 students*
- *8.3% Free and Reduced Lunch students*
- *Services for ALL students, including Special Education, English Language Learners, Out of District Placement programming*

Program



- *Standards-Based Curriculum that drives instruction and assessment*
- *Model PLC Instructional Teams directly impacting instruction/student learning*
- *A comprehensive pro-social skills program*
- *Ongoing curriculum assessment and revision*
- *Best Practice Instruction*
- *Continuous opportunities for teacher professional growth*
- *Technology and focus on 21st Century Skills and project-based learning*
- *Support services for students/families in need*

ACHIEVEMENTS



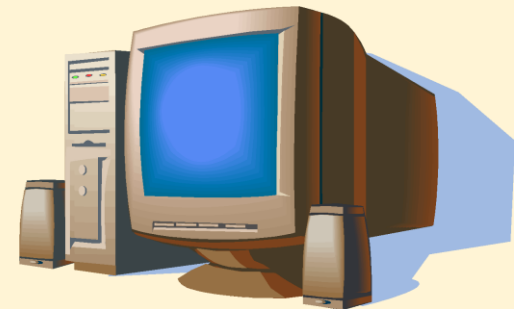
- *Excellent student achievement as measured by standardized test scores*
- *Recognized as NJDOE **Reward School***
 - *(1 of 6 schools in Monmouth County and the only K-8 public school with this distinction)*
- *Successful student placement in competitive Magnet High School, Academies and accelerated H.S. coursework*
- *Diversified and challenging academic program that includes High School Algebra I, STEM, and Spanish*
- *Enrichment opportunities for all students*



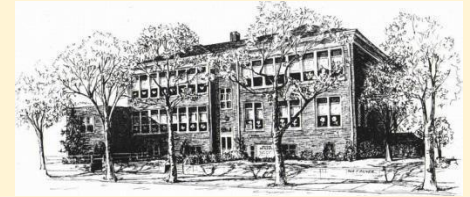
Technology



- *Updated building wide technology infrastructure*
- *Device-rich classrooms*
- *Technology embedded in grade level curriculum*
- *Software and web-based supplemental support resources*
- *Student achievement data base*
- *Building security measures*



Proposed budget contains funds to...



- *Enhance campus Safety and Security*
- *Provide high quality staff and administrative professional development through partner district collaboration*
- *Implement mandates and requirements for staff training, new PARCC high stakes assessment*
- *Maintain and protect campus and facility investment through maintenance and timely repairs*
- *Implement 21st Century Learning environments into all areas of curriculum*
- *Maintain curricular renovation cycle, expand instructional resources for special services programming*
- *Continue expansion of co-curricular and elective opportunities for all students*

Commitment to Fiscal Responsibility



- *Every line item in budget has been examined for cost vs. benefit*
- *Options for shared services continue to be vigorously pursued*
- *Allocation of people, responsibilities, and resources to meet every need*
- *In-house special education classes*





2015-2016

Tentative Budget



Estimated Tax Increase

Budget Increase - \$38,565

Tax Increase = 0.004 cents per \$100 assessed value



PROPERTY ASSESSMENT	2014/2015 SCHOOL TAX/YEAR	2015/2016 SCHOOL TAX/YEAR	ANNUAL INCREASE
\$600,000	\$1,986	\$2,010	\$24
\$750,000	\$2,483	\$2,513	\$30
\$850,000	\$2,814	\$2,848	\$34
\$900,000	\$2,979	\$3,015	\$36
\$1,050,000	\$3,476	\$3,518	\$42
\$1,200,000	\$3,972	\$4,020	\$48
\$1,350,000	\$4,469	\$4,523	\$54
\$1,500,000	\$4,965	\$5,025	\$60

What is the School District's Total Budget?



**I. General Fund
\$4,333,437**

**II. Special Revenue
\$32,527**

Federal and State Grants

- Title II
- No Child Left Behind
- IDEA

**Local Tax
Levy**

\$3,305,649

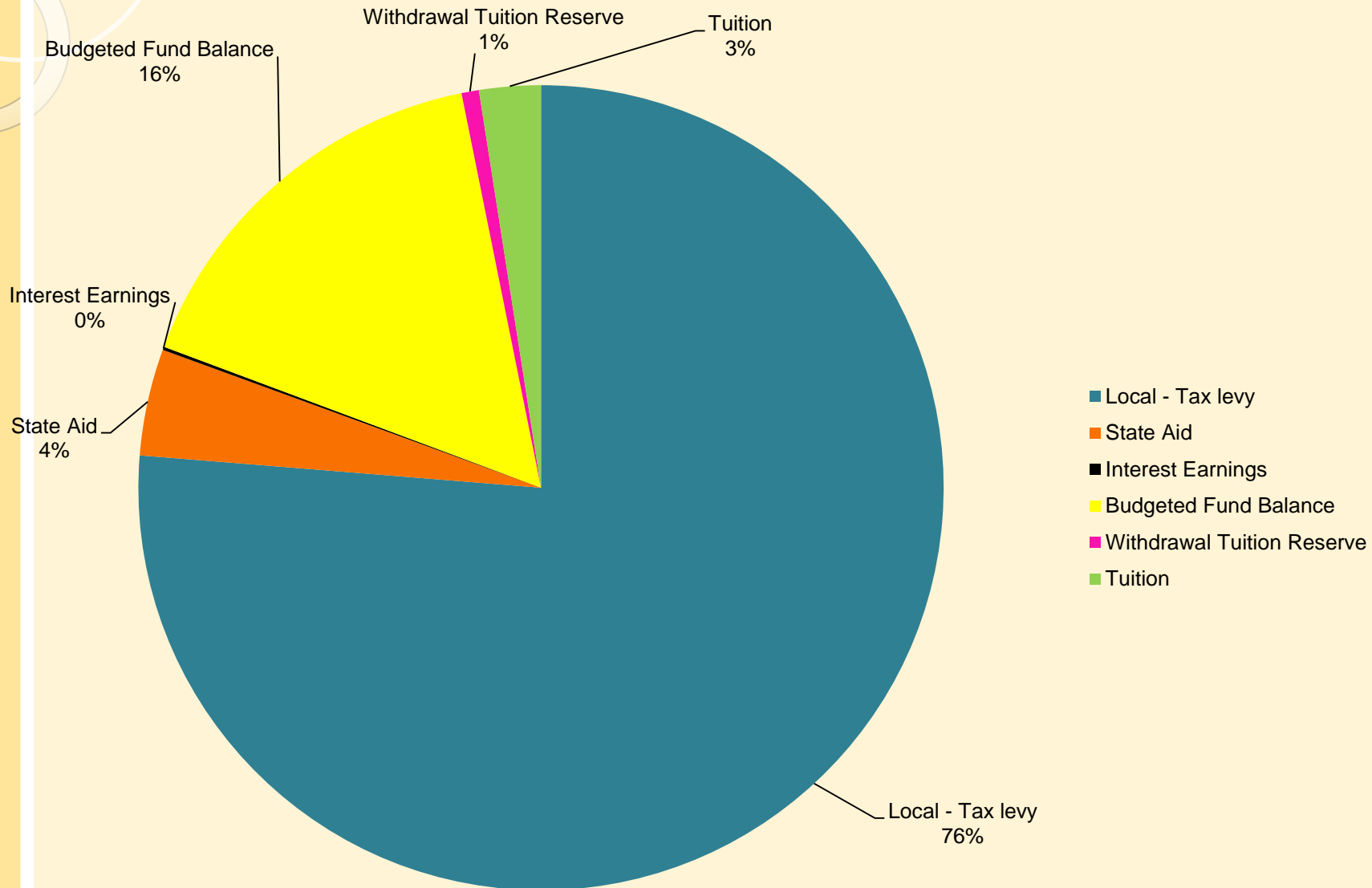
**This is the
portion of
the budget
raised thru
taxes.**

\$1,027,788
State Aid,
Tuition,
Transportation
Jointure,
interest, excess
surplus,
miscellaneous

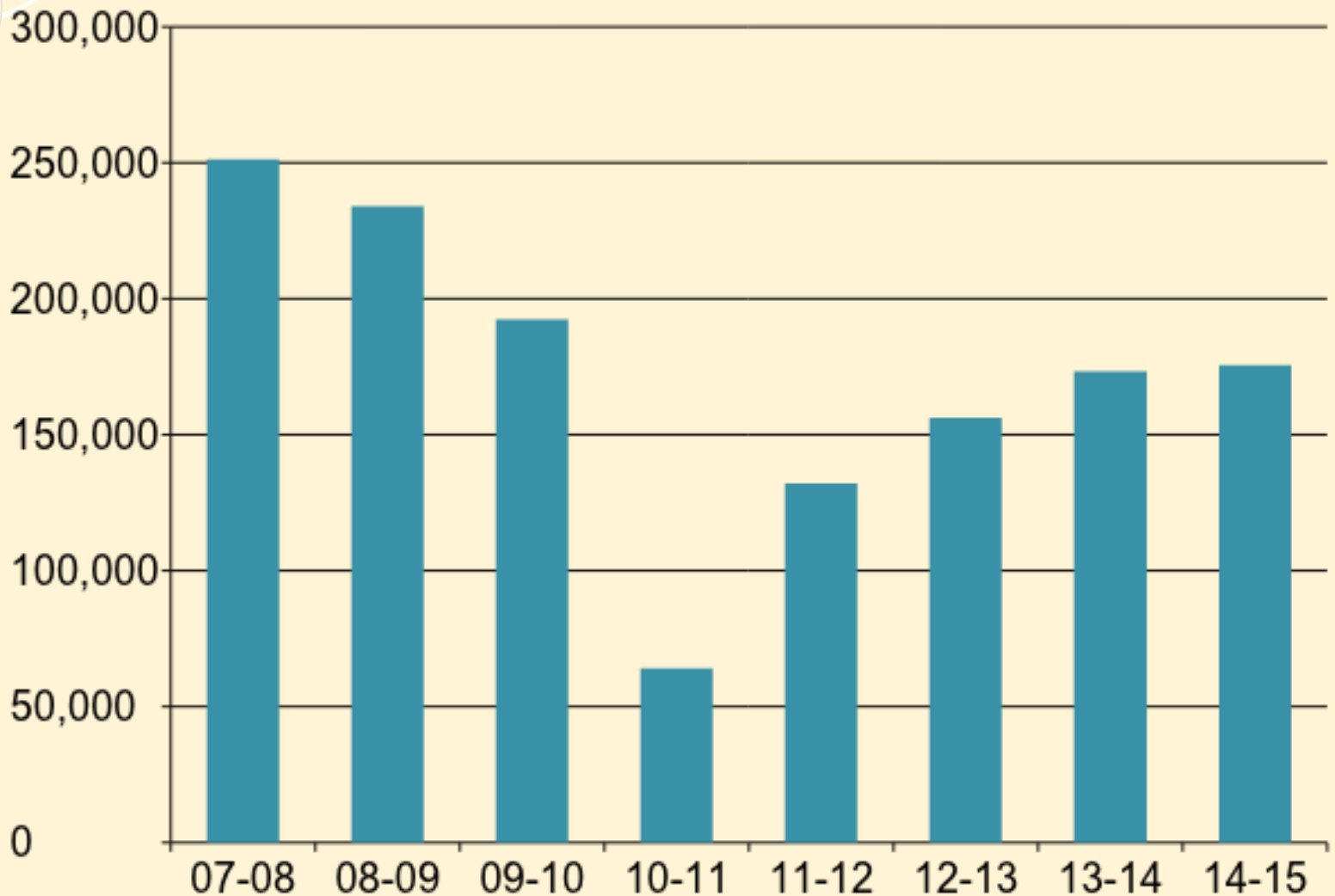
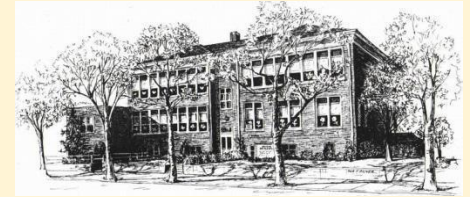
**III. Debt Service
\$426,923**

Principal and interest
payments on bonds
approved in previous
school election for addition
and renovation.

Where does the \$ come from?



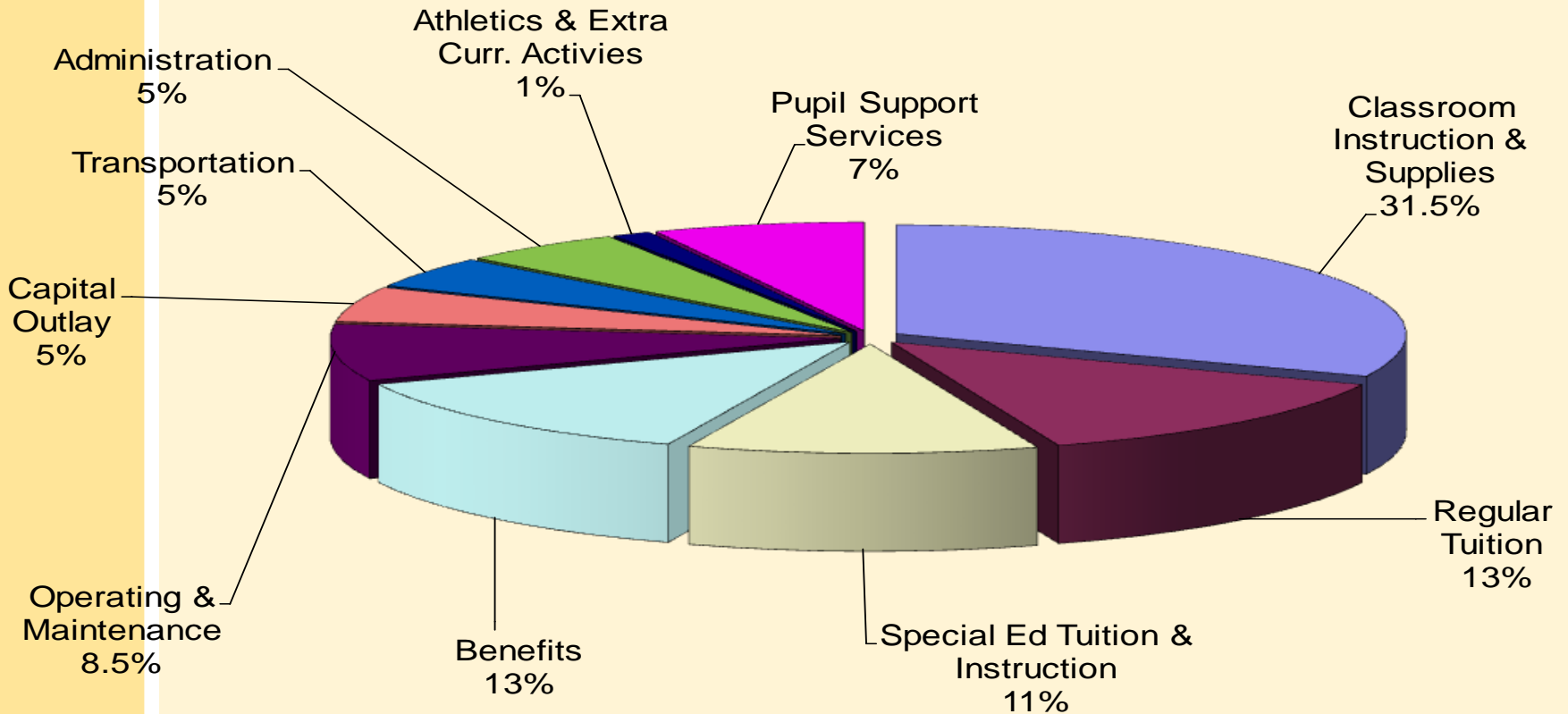
History of State Aid



Where does the \$ go?



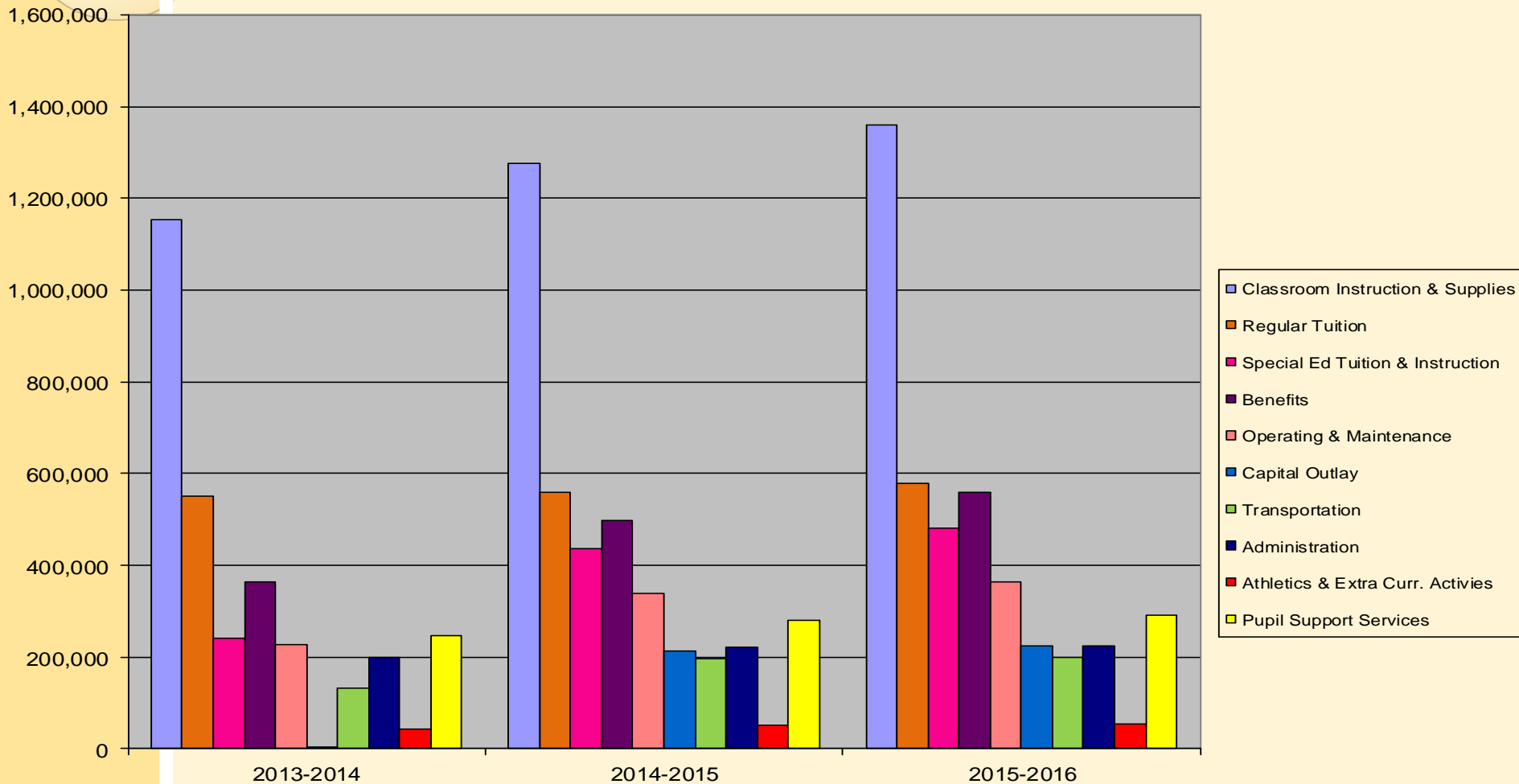
Avon-by-the-Sea Board of Education 2015-2016 School Budget Expenditures



- | | | | |
|------------------------------------|------------------------|----------------------------------|----------------|
| Classroom Instruction & Supplies | Regular Tuition | Special Ed Tuition & Instruction | Benefits |
| Operating & Maintenance | Capital Outlay | Transportation | Administration |
| Athletics & Extra Curr. Activities | Pupil Support Services | | |

Comparative Expenditures

Avon-by-the-Sea Board of Education
 2015-2016 School Budget
 Budget Expenditures for the past 3 years

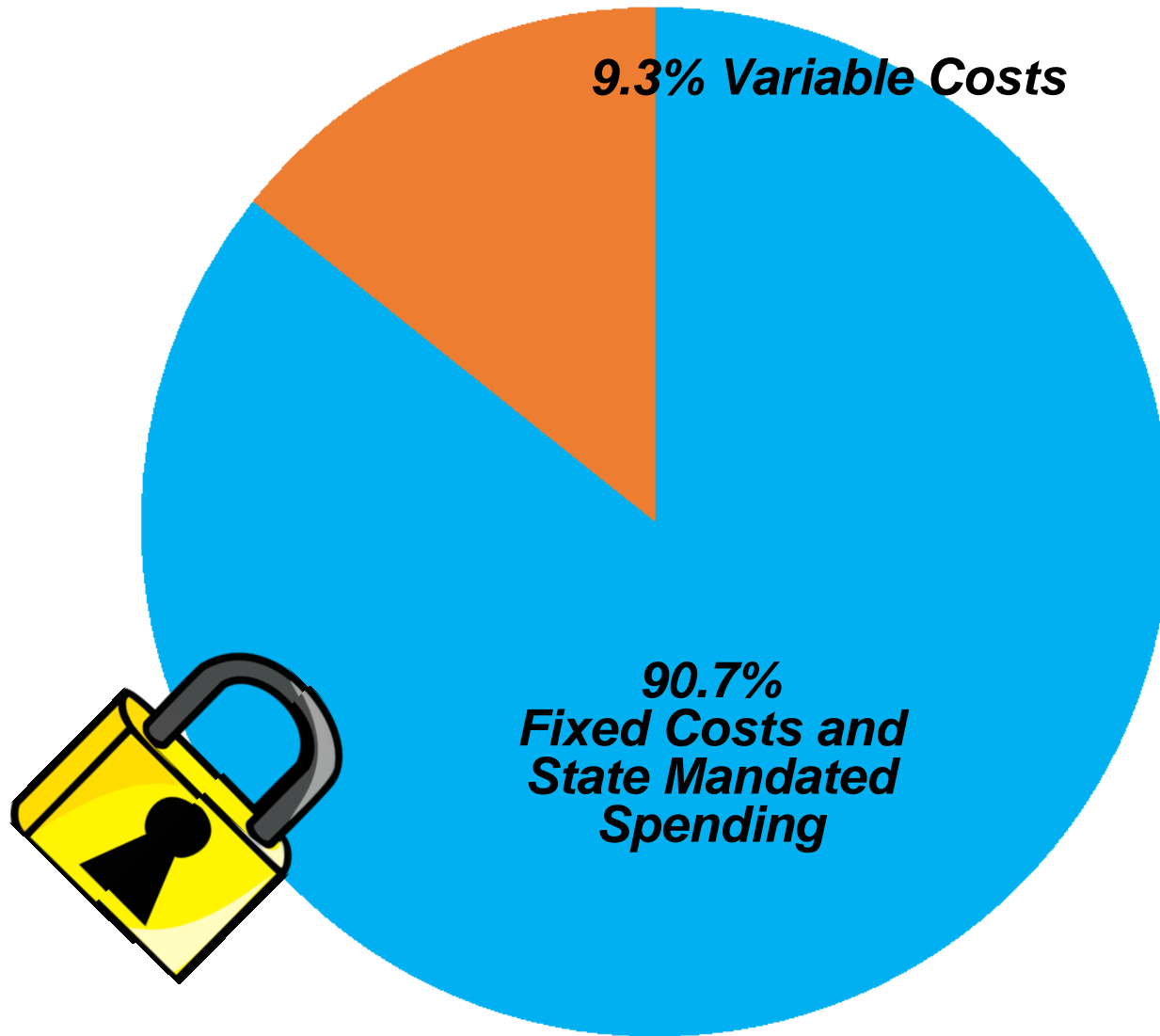
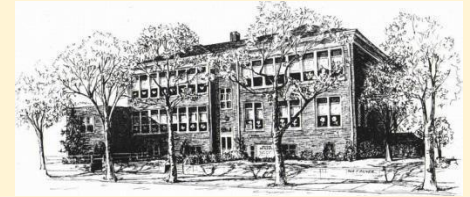


Required Spending



- **Contracted Salaries** (negotiated, then fixed for 3 years)
- **Contracted Health Benefits** (negotiated, then the benefits are fixed for 3 years, however the costs are not.)
- **Mandated Special Education Spending**
- **Mandated Professional Services:**
Lawyer & Auditor
- ***Essential* Building Maintenance:**
Systems maintenance & testing, repairs
- **Transportation**
- **Insurance:** Property, Liability
- **State Mandated Testing Services**

Required Spending



Budget Information



- www.avonchool.com
- 2015-2016 School Budget Presentation
- 2015-2016 User Friendly Budget



Avon Elementary School
avonschool.com